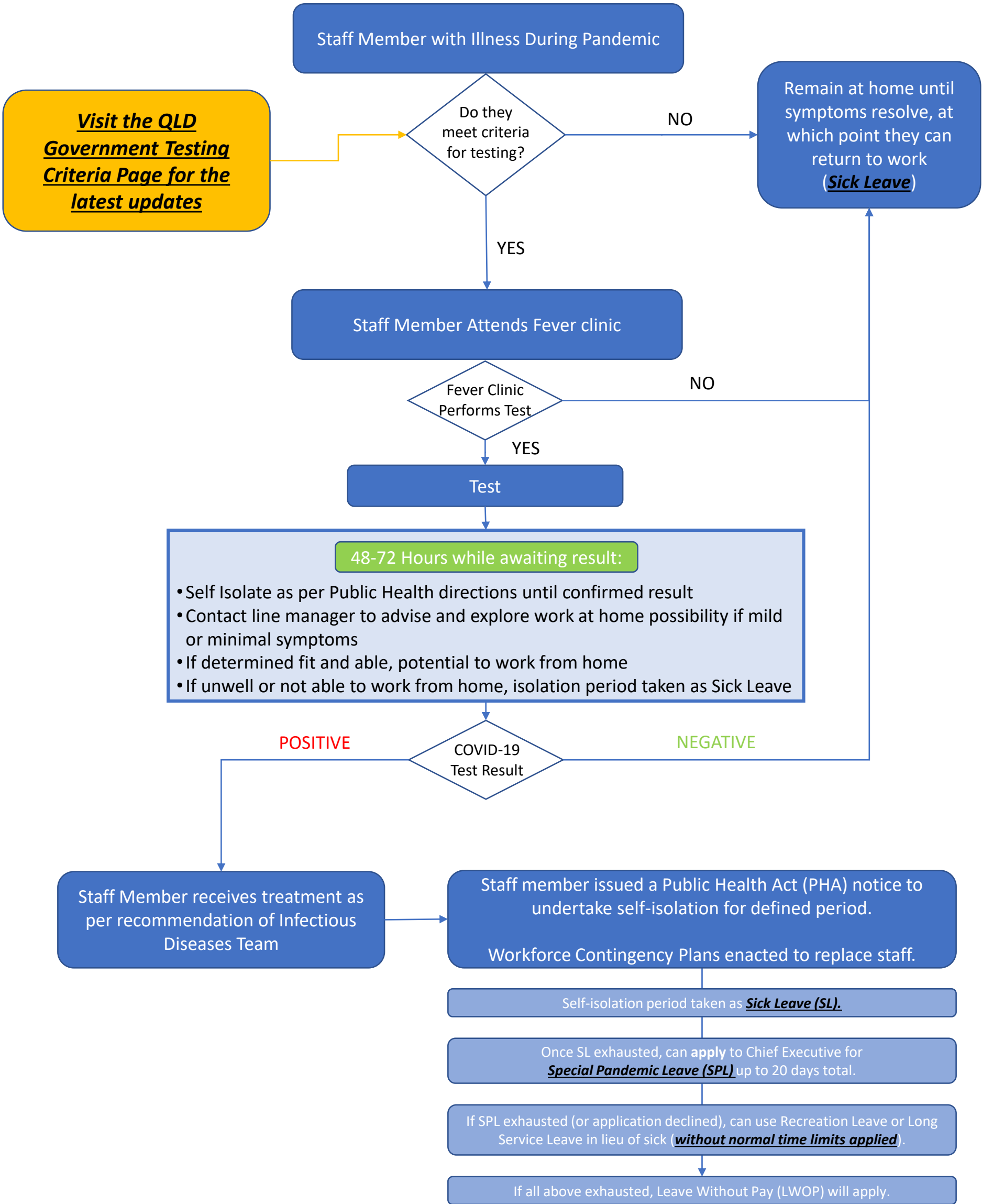


# Employee Self-Isolation (Special Pandemic Leave) - Flowchart



**Visit the QLD Government Testing Criteria Page for the latest updates**

**48-72 Hours while awaiting result:**

- Self Isolate as per Public Health directions until confirmed result
- Contact line manager to advise and explore work at home possibility if mild or minimal symptoms
- If determined fit and able, potential to work from home
- If unwell or not able to work from home, isolation period taken as Sick Leave