

Gold Coast Health's Professional Practice Model

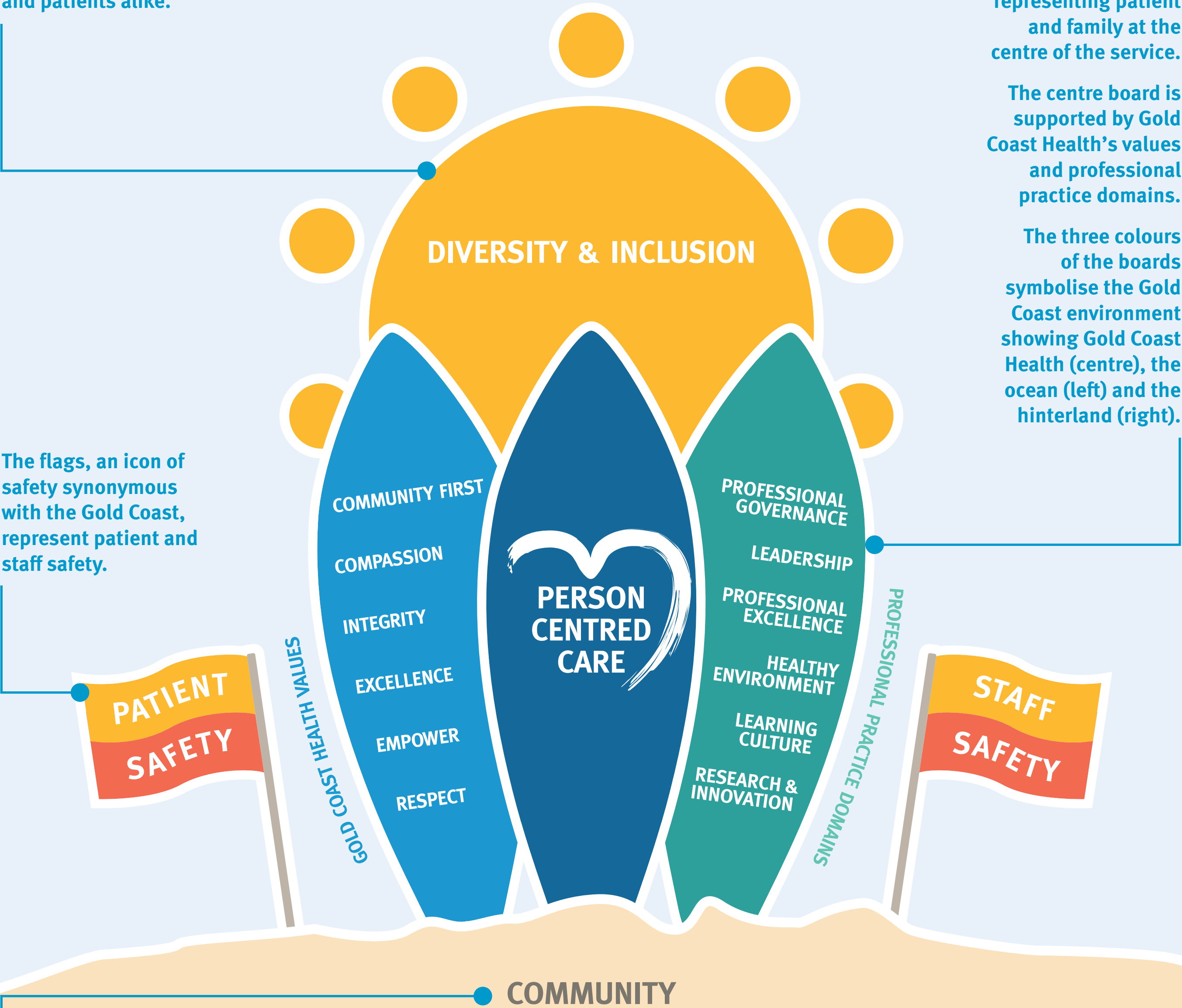
The sun represents Gold Coast Health's commitment to diversity and inclusion for staff and patients alike.

The surfboards represent Gold Coast Health as a whole, with the board representing patient and family at the centre of the service.

The centre board is supported by Gold Coast Health's values and professional practice domains.

The three colours of the boards symbolise the Gold Coast environment showing Gold Coast Health (centre), the ocean (left) and the hinterland (right).

The flags, an icon of safety synonymous with the Gold Coast, represent patient and staff safety.



The surfboards stand proudly in the sand demonstrating that Gold Coast Health is embedded in the community and recognises the traditional custodians of the land. The sand is a representation of community and the Yugambeh and Kombumerri people.