



ARTBEAT

2024

Art Exhibition and Music Performance

Entry information and form



Art Exhibition – Entry Instructions

Exhibition runs from Tuesday, 8 October – Thursday, 31 October

Requirements

- The ArtBeat Art Exhibition is open to people with lived experience of Mental Illness
- Entrants may submit up to three original artworks solely created by the entrant.
- Artwork may include paintings, drawings, sculptures, poetry. Artists are also welcome to provide written reflections on their work.
- All individual pieces must have a label with the following information on the back - artist name, title of work, medium used and sale price if selling.
- Small artworks and light artworks will be attached to carpet screens with velcro.
- Larger, heavy artworks must have hooks and string for hanging.
- Entry form must be submitted by **Friday, 14 September 2024**
- The Visual Art Coordinator may refuse work that is deemed unsuitable or unable to be hung in the space provided.
- All reasonable care will be taken with all entries submitted; however, Gold Coast Health staff will not be held accountable for loss or damage to artworks.

Delivery of Artwork

Gold Coast University Hospital Exhibition:

Artwork must be delivered by **Friday, 27 September 2024 to:**
Mental Health Reception area (for attention of Helen Mason - Artisan)
F Block, Lower Ground, Gold Coast University Hospital.

OR: Jodi Ferrari / Maddie Collins via Main Reception desk, GCUH Main Foyer.

*Please email artbeat@health.qld.gov.au to advise of delivery time and day.

Robina Hospital Exhibition:

Delivery to Robina Reception **Monday, 30 September or Tuesday, 1 October.**

Email Danielle Sweeney at artbeat@health.qld.gov.au to advise.

Sale of Artwork

- We cannot sell art on hospital premises; however artists are entitled to price and sell their own work in negotiation with the buyer.
- If somebody wants to buy an artwork, a red dot will be placed on it, indicating it has been sold.
- Sales will be negotiated after the exhibition either by the artist, or by the exhibition coordinator on the artist's behalf.
- All proceeds go to the artist.

Pickup of Artwork

Gold Coast University Hospital Entrants:

Artworks can be collected on **Friday, 1 December** from GCUH. Please advise of pick-up time, or any alternate arrangements by emailing Helen Mason at artbeat@health.qld.gov.au

You can also call Mental Health reception on 56877249 to leave a message for Helen.

Robina Hospital Entrants:

Pick-up Robina, **Thursday 31 October.** Email Danielle Sweeney artbeat@health.qld.gov.au to advise of pick-up time or make alternate arrangements.



Art entry form

Artist name:

Artist contact number:

Artist email:

Title of artwork (1):

Medium used:

Size:

Price:

Title of artwork (2):

Medium used:

Size:

Price:

Title of artwork (3):

Medium used:

Size:

Price:

Statement by the Artist:

- I am a hobby artist/musician/poet/story-teller. This artwork/music is made in my capacity as an individual – in the course of an activity that is a private recreational pursuit or hobby and does not meet the definition of enterprise for tax purposes.
- I agree to have my artwork/music, written reflections and full name displayed in the Mental Health Week Art Exhibition. I also agree to have my photograph taken with my work to be published and reproduced in any ArtBeat publications.
- I grant the Gold Coast Hospital and Health Service non-exclusive rights to reproduce and commercialise my artwork/music and written reflections in material form, to photograph, publish and/or communicate it to the public for the following exhibition-related purposes and anything incidental to such purposes, such as in an ArtBeat publication, by the GCHHS: marketing, publicity, educational and publication uses, the exhibition in all media, including but not limited to electronic/digital, broadcasting and print media, in perpetuity. I understand that I will not be entitled to any fee for such use. I consent to my full name as the author of the work being published where the work is reproduced.
- I will let any purchaser of my artwork know of my agreement to it being published in an ArtBeat publication.

Name of entrant: _____

Signature: _____ Date: _____

I will be exhibiting at: ☐ Gold Coast University Hospital ☐ Robina Hospital (choose one)

For entrants under the age of 18, a Parent/Guardian must consent by signing the following:

Name of parent/guardian: _____

Signature: _____ Date: _____

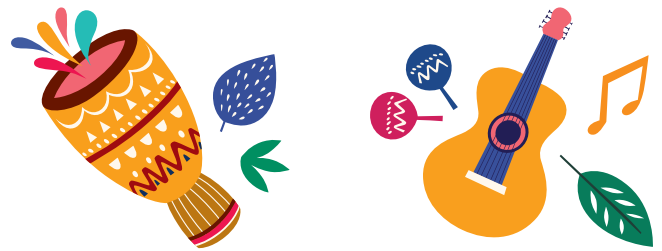
Art Exhibition Entrant - Submit this Art Entry form to:

Option 1: Mail to Helen Mason – Creative Artisan
Mental Health & Specialist Services, Gold Coast University Hospital
Mental Health Shared Area – F Block, Lower Ground
1 Hospital Boulevard, Southport 4215

Option 2: Scan and email to Helen Mason: artbeat@health.qld.gov.au

For enquiries, please direct emails to Helen Mason (GCUH entrants)
or Danielle Sweeney (Robina Hospital entrants) at artbeat@health.qld.gov.au

Please ensure to select GCUH or Robina Hospital when submitting your entry form.



Music entry form

ArtBeat is a music and arts festival celebrating the creative strengths of people living with a mental illness. We will be hosting a music festival involving live performances on **Friday, 11 October 2024 from 11am - 2pm** and we would love you to come and perform.

Where: The concert will be held at the Gold Coast University Hospital Parklands, at the rear of the hospital.

Equipment: We have a variety of music equipment/instruments available for use within performances and will try to cater to everyone as best we can. You are welcome to bring any of your own equipment as needed. Any personal equipment that you bring to the event will be your responsibility as Gold Coast Health staff will not be held accountable for any loss or damage to equipment.

Contact: Lani Lawson is facilitating the music aspect of ArtBeat. She will contact you once she has received your details to discuss the finer aspects of your performance. You may contact Lani through reception on (07) 5687 7249 to discuss any questions, or alternatively, email artbeat@health.qld.gov.au

Please complete the following details if you are interested in performing in our ArtBeat festival. We welcome all different styles of music and individuality and would love you to be a part of the festival.

Artist name:

Artist contact number:

Artist email:

Musical style/genre of performance:

Length of performance (approx.):

Instruments/equipment involved in performance:

I will bring my own equipment: Yes / No

I am interested in playing as part of a group: Yes / No

Other performance notes/considerations:

Music Entrant - Submit this Music Entry form to:

Option 1: Mail to Lani Lawson – The Music Therapist
Mental Health & Specialist Services, Gold Coast University Hospital
Mental Health Shared Area – F Block, Lower Ground
1 Hospital Boulevard, Southport 4215

Direct any enquiries to Lani on email below.

Option 2: Scan and email to Lani Lawson: artbeat@health.qld.gov.au