

Acute Trauma and Orthopaedics Unit

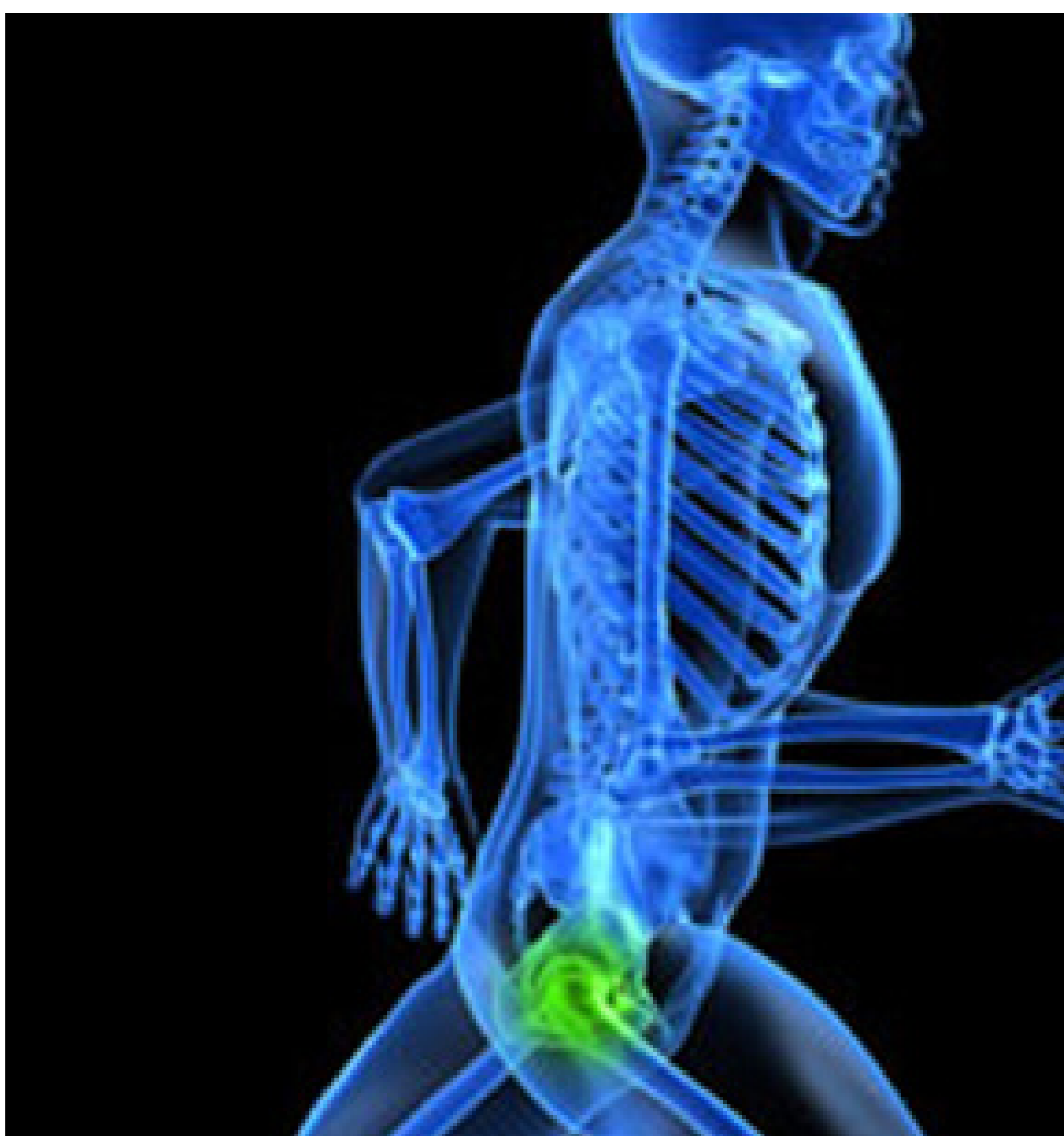
C6 East | Gold Coast University Hospital

acute trauma orthopaedics

With 28 beds at GCUH, the Acute Trauma and Orthopaedics Unit is dedicated to providing expert, high quality care for Acute musculoskeletal conditions, high impact multi-trauma patients and general ad thoracic surgery procedures.

Learning Opportunities

- Post Intensive Care patients
- Care of the multi-trauma patient
- ICC Management
- Wound Management
- Fracture care
- Post-operative care
- Tracheostomy management
- Telemetry management
- Care of pre-operative cardiac patients
- Care of thoracic surgery patients
- Acute Pain Management
- Multidisciplinary collaboration



Professional Opportunities

- Clinical leadership and management development
- Preceptorship
- Clinical Facilitation
- Ward based leadership
- Portfolio Management
- Magnet Ambassador
- Professional development planning

Educational Resources

- Clinical Facilitator
- Nurse Educator
- Transition Support Program
- Preceptorship
- Peers
- Learning On Line
- Simulation Service
- Orientation manual and supported practice
- Quality portfolios (NSQHS Standards)
- Continuing professional development and lifelong learning plan