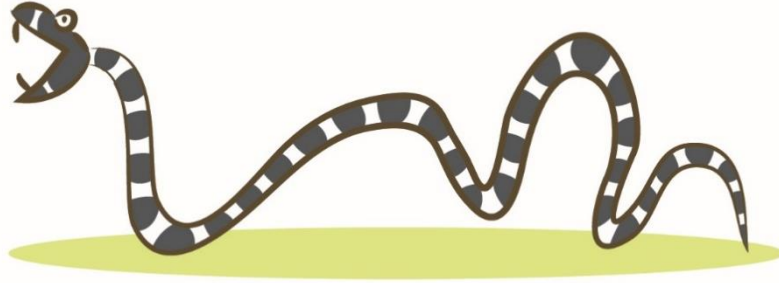


# Ways to help me say... 'sl'



## 1. Show me (visual cues)

- Help me look in a mirror so I can see my mouth for both the 's' and 'l' sounds
- You model the sounds by repeating lots of words that contain the 'sl' sounds

## 2. Tell me these tips (verbal cues)

- "Remember to use your two sounds together."  
(e.g., "s...l" = "sl")

## 3. Help me say my sound in:

- Beginning of words (e.g. slime, slide)
- Phrases (e.g. go down the slide)

## 4. Other tips which might help me:

- Initially separate the sounds and then combine them to help me say both sounds  
(e.g. s...lide → slide)
- Or try chaining it backwards  
(e.g. leep → sssleep)

Please give me lots of **praise**.  
e.g. "I heard you say both sounds!"

You can also praise me for good  
sitting/listening/looking/trying e.g. "Good  
trying"

**"I'm getting better at saying my 'sl'  
cluster each time we practice  
together!"**

**Thanks so much for helping me!**